



Capability Statement

Jason McDonnell	General Manager	Perth	08 9333 4314
Karl Staley	Finance Manager	Perth	08 9333 4382
Brandi-Lee Gray	National Account Manager	Perth	08 9333 4391
David Berryman	Senior Business Development Manager	Perth	08 9333 4313
Wes Blagg	National Sales & Operations Manager	Perth	08 9333 4301
Mark Lill	Regional Manager (Eastern)	Singleton	02 6571 6310

Table of Contents

1	Company Details.....	3
2	Introduction.....	4
	2.1. A Sime Darby Company.....	4
	2.2. Our Locations – National coverage / Local presence	5
3	Corefleet Products.....	6
	3.1. The Core Fleet.....	6
	3.2. Customised and equipped vehicles.....	7
	3.3. 4WD and 2WD Rentals	8
	3.4. Buses	8
4	Mechanical Services	9
	4.1. Approved handbook servicing status	9
5	Fleet Leasing	9
6	The Corefleet Advantage.....	10
	6.1. A professional and experienced team	10
	6.2. Personalised account management	10
7	Fair Wear & Tear Guide Summary.....	11
8	Safety Management System.....	11
9	Environmental Management System	12

1 Company Details

Name of Business	Corefleet
Legal Capacity of Entity	Sime Darby Fleet Services Pty Ltd
ABN	16 008 730 390
Names of Directors or Partners	Jason McDonnell – General Manager
Names of related bodies corporate (within the meaning of the Corporations Act e.g. holding company, subsidiaries)	Sime Darby Berhad Group Communications and Corporate Affairs 17 th Floor, Wisma Sime Darby Jalan Raja Laut 50350 Kuala Lumpur Fax: 603 26980645
No of employees in Business	42
Turnover of Business in last financial year	AUD24 million
Details of current and past projects	<ol style="list-style-type: none"> 1. Moolarben Coal Operations – Lease and Rental Services 2. Stratford Coal – Lease Fleet and Mechanical Services 3. South32 – Lease Fleet Services 4. BMA Goonyella – Rental and Mechanical Services 5. Collinsville Coal Mine, Glencore – Rental and Mechanical Services 6. Newlands Coal, Glencore – Rental and Mechanical Services 7. Karara – Rental and Mechanical Services 8. Newmont, Boddington Gold Mine – Rental Services 9. QGC Gas Surat Basin – Rental Services 10. Covalent Lithium – Rental Services 11. Atlas Iron – Rental Services 12. Rumble Resources – Rental and Mechanical Services 13. Sandy Ridge (Tellus) – Lease Fleet
OH&S Policy	Corefleet is committed to achieving the implementation, maintenance and improvement of the Occupational Health and Safety standards for ourselves and our customers.
Work Cover Registration Numbers	WA WWH 0043768 QLD WAC 020815340 NSW MWN 6020446 033 VIC 16529504
Insurance Details	Public Liability \$20m Product Liability \$20m Motor Vehicle \$30m Third Party \$30m

2 Introduction

Corefleet is Australia's leading supplier of light commercial vehicle rental, lease and mechanical services solutions for industry, commerce and professional service providers. As a rental & leasing specialist, we possess a keen understanding of the challenges you have operating in Australia's harsh conditions. We recognise that our customers require a reliable and responsive specialist vehicle rental and mechanical services partner and our full scope of services are designed to meet your industry specific requirements. We have earned a strong and respected reputation when it comes to vehicle hire and service in Australian conditions and remote areas.

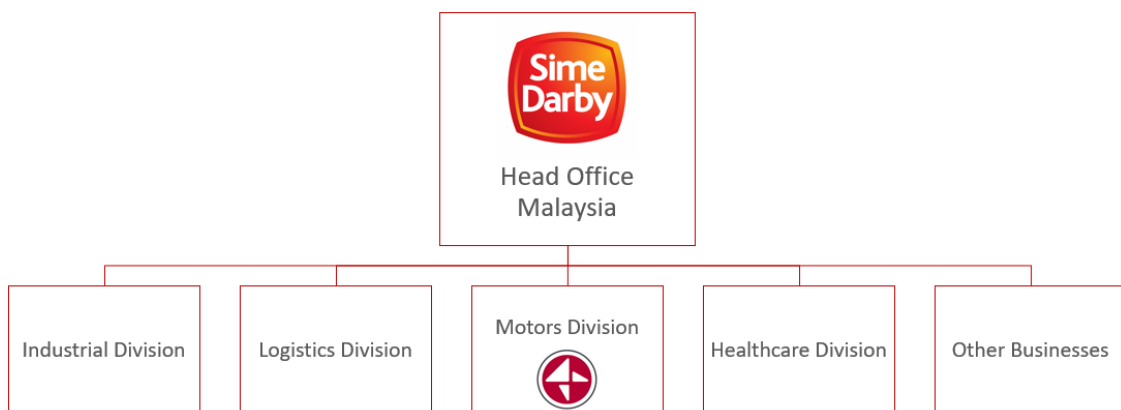
Backed by exceptional resources, we are driven by a passion for delivering smart, supportive and flexible solutions. Corefleet's team of highly skilled and proactive professionals thrive on pushing the boundaries of innovation and building strong and trusted partnerships.

2.1. A Sime Darby Company

Corefleet is part of the Sime Darby Group. Sime Darby is Malaysia's leading multinational and one of South-East Asia's largest companies. Sime Darby owns and operates companies in five core businesses, including the Motor Group to which Corefleet belongs. Sime Darby Motors aims to be a leading automotive player in the Asia Pacific region with sustainable growth in profitability and commitment to excellence in customer service.

Spanning 19 countries, Sime Darby is supported by a team of 20,000 people worldwide. In maintaining and extending our global presence, Sime Darby is determined to be a successful Malaysian-based multinational with core businesses in motors, industrial, energy and utilities, plantation and property.

Being part of Sime Darby provides Corefleet with the financial advantage to pursue our business goals and focus on service flexibility and excellence.



2.2. Our Locations – National coverage / Local presence

Corefleet offers excellent national coverage with our branch locations throughout Western Australia, Queensland and New South Wales and Victoria. In addition, Corefleet's network of agencies allows us to service customers right across Australia.

In Western Australia, Corefleet's locations support the company's strong presence in the mining industry, whilst also providing excellent coverage to service all other industry needs.

In Queensland, our locations are strategically placed throughout the Bowen Basin and Brisbane, while in NSW our services extend from Newcastle into the coal rich Hunter region.

In Victoria, our Melbourne branch in Noble Park is conveniently located only 25km from the CBD to service the civil construction industry, with the flexibility to cater for all other light commercial vehicles as needed.

Western Australia

Perth
Kalgoorlie
Newman

Queensland

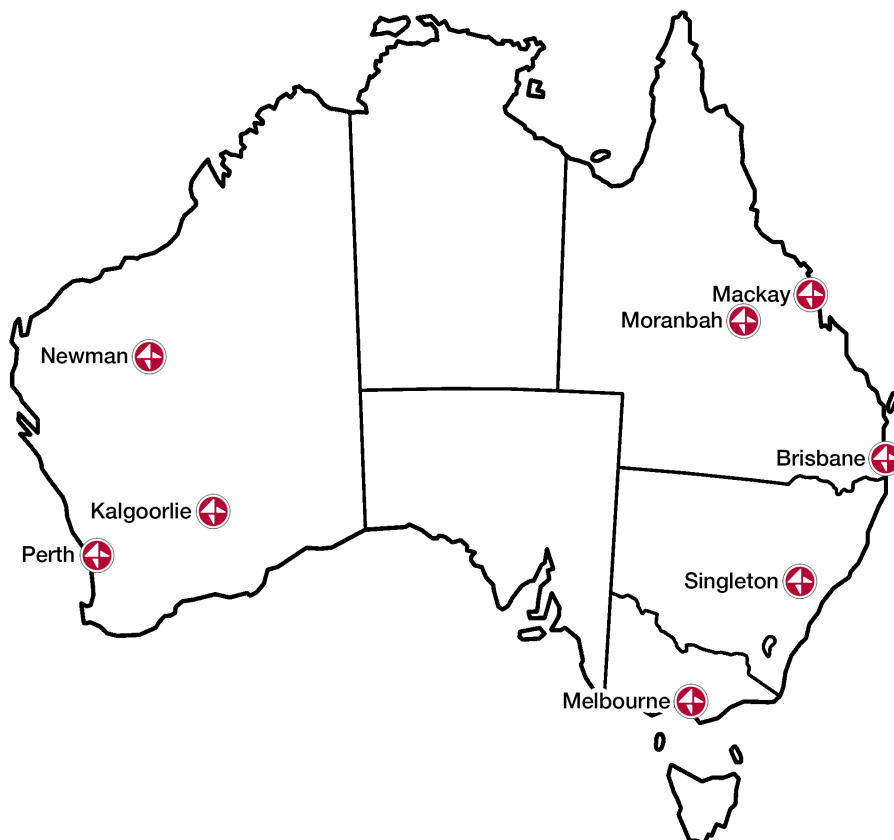
Brisbane
Mackay
Moranbah

New South Wales

Singleton

Victoria

Melbourne



3 Corefleet Products

3.1. The Core Fleet

Throughout Australia, Corefleet manages a large and diverse fleet of late model utilities (utes), 4WDs, minibuses and passenger cars. All vehicles are specially selected to meet Corefleet's rigorous standards and are custom-equipped to match client requirements. This ensures you have peace of mind when it comes to vehicle performance, reliability and safety in Australia's unique environment.

A quick snapshot

- Throughout Australia our fleet is 99% commercial
 - 4WD (Trays, Wagons, Dual Cabs)
 - 2WD 12 and 22 seat buses
- The fleet comprises vehicles from leading manufacturers from around the world.
 - After market specifications fitted by highly-trained mechanics in our own workshops are designed to meet the highest standards
- Corefleet is continuously updating our fleet with the latest vehicles.



3.2. Customised and equipped vehicles

Corefleet's range of customised vehicles excels in the rough conditions unique to remote areas. Equipment for mine-based vehicles may include 'roll-over protection', revolving lights, UHF radio, jump start kits, extra water/fuel jerry cans and roof racks. Configuring vehicles for specific conditions means they can be supplied to clients with no restrictions on where they may reasonably be taken. Corefleet pride themselves on being at the forefront of industry trends which includes upgrading our fleet to include ANCAP 5 rated vehicles for Rio Tinto and BHP/BMA sites, as well assets utilised at Wind & Solar Farms, Arrow, QGC, Origin, Santos, Anglo Coal, including IVMS where required.

Item	Mine Spec	Civil Spec
ROPS (Roll Over Protection) or ANCAP 5 rated vehicles	Included	Included
Battery Isolator	Included	
LED Mounted Beacon	Included	Included
Cargo Barrier	Included (Wagons Only)	
Fire Extinguisher	Included (1kg West, 4.5kg East)	Included (4.5kg)
First Aid Kit (Basic)	Included	Included
Illuminated whip aerial with fluorescent flag	Included	
Handbrake Alarm	Included	
Automatic Headlights On	Included	
LED high mount light	Included	Included
Rear Window Mesh Protection	Included (Utilities Only)	
Diamond Grade Yellow Reflective Tape	Included	Included
Reverse Beeper	Included	Included
Canvas Seat Covers	Included	Included
Radio – UHF 40 Channel	Included	Included
Safety Triangles x 3	Upon Request	Upon Request
Wheel Chocks	Upon Request	Upon Request
Wheel Nut Indicators	Included	Included
Positive ID Signage (Call Sign ID)	Upon Request	Included
Pre-Operation Safety Check (Pre-Start Book)	Included (Eastern Region)	
Anderson Jump Start Receptacle	Included (Eastern Region)	
Starter Motor Isolator	Included (Eastern Region)	
Second Spare Tyre	Price On Application	Price On Application
H/Vis Vest, Glove, 4WD 1 st Aid, 20L H2O, Fold Shovel	Price On Application	Price On Application
Trolley Jack (1300 KG Small)	Price On Application	Price On Application
Tool Box – Small (each)(Max 1.2m Ali)	Price On Application	Price On Application
Tool Box – Large Field Service (Pair)	Price On Application	Price On Application
Tool Box – Large (each) Coffin Type	Price On Application	Price On Application
Water Container 20Litre Plastic	Price On Application	Price On Application
Water Tank 30L Fitted	Price On Application	Price On Application
Radio UHF GME TX3600 Programmable	Price On Application	Price On Application
Radio VHF Simeco 9020	Price On Application	Price On Application
Radio – VHF Tait 8200	Price On Application	Price On Application
Radio – VHF Motorola GME TX4800	Price On Application	Price On Application
Radio – VHF Motorola GM 339	Price On Application	Price On Application
Radio – VHF P25 Digital Motorola XTL2500	Price On Application	Price On Application
Collision Avoidance System (CAS)	Price On Application	Price On Application
In Vehicle Monitoring System (IVMS)	Price On Application	Price On Application

3.3. 4WD and 2WD Rentals

Corefleet provides exceptionally reliable, late-model 4WD and 2WD rental vehicles to suit long and short-term projects nationwide in primary industry, Government and the mining and construction sectors. Corefleet has a dedicated focus on equipping and configuring its 4WDs for use wherever demanding or remote area conditions apply including:

- Mine site operations
- Civil works projects
- Pipeline construction
- Road / Rail construction
- Rural support services
- Renewables – Solar and Wind

Vehicles are meticulously maintained to rigorous standards and are serviced in our own or accredited workshops to ensure their safety and performance in the harsh Australian environment.

With a flexible approach, Corefleet offers contracts from standard short-term rentals to long-term solutions. Clients have the option to select several additional features and products, such as damage liability reduction, servicing and maintenance programs.

3.4. Buses

Corefleet can provide a variety of full mine-specification buses including:

- 12 seat Hi-Ace Vans
- 21 seat Coaster Buses
- Larger buses are available upon request



4 Mechanical Services

Corefleet has over 50 years' experience in servicing, maintaining and equipping vehicles for industry across Australia. We directly employ full-time mechanics ensuring absolute efficiency and attention to detail wherever you are located. Corefleet can adapt services to meet your requirements – a significant part our core focus. Corefleet has the ability to set-up and run mechanical services and maintenance workshops on a client site where required.

4.1. Approved handbook servicing status

Corefleet's mechanical service operations hold approved handbook servicing status with all major vehicle manufacturers. This guarantees the client excellent service levels and total peace of mind. The Corefleet team is committed to maintaining this status for every vehicle that is serviced in our workshop.

5 Fleet Leasing

Corefleet offers tailored and flexible fleet leasing solutions that are responsive to the diverse industry and operational demands of our wide client base.

With vehicles in metropolitan and remote locations across Australia, Corefleet partners with clients on a strategic level to provide fleets of exceptionally well-maintained and serviced vehicles.

Fleet leasing arrangements and plans can be customised to fit with each client's operational requirements. This enables a leasing solution to be optimised in line with specific performance and business objectives.

Corefleet understands the positive effect that an efficient, adaptable and reliable fleet leasing solution can have on business success.

6 The Corefleet Advantage

6.1. A professional and experienced team

The Corefleet team is a highly-skilled and experienced group of professionals. Across the country, our employees contribute to the organisation in a variety of disciplines, and bring a wealth of knowledge to each facet of the business. At management level, Corefleet people offer many years of experience in a wide range of industries, including the specialist vehicle rental market. With a strong service ethic across all divisions, Corefleet values and promotes the continuous development of expertise.

6.2. Personalised account management

As part of Corefleet's commitment to our clients, the company ensures that each customer is assigned an account manager to assist with the ongoing development of the relationship. Corefleet believes it is imperative to understand client requirements for the short and long-term success of any project, enabling the company to provide flexibility in solutions and ultimate success.

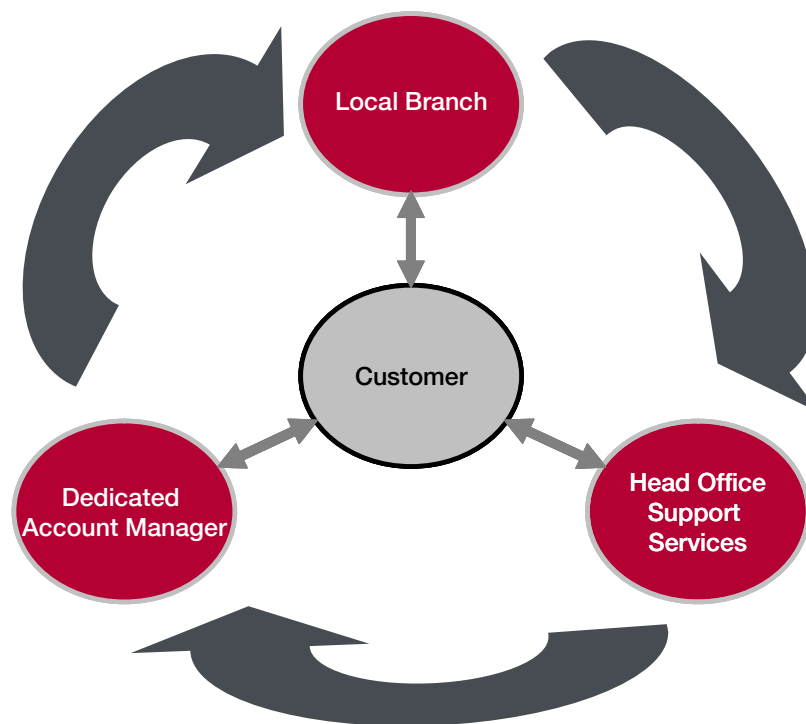


Figure 1. Corefleet's customer service model illustrating the customer interaction with Corefleet

7 Fair Wear & Tear Guide Summary

Corefleet has a comprehensive Fair Wear and Tear Guide ensuring fairness for the company and the customer. Please read the full details on our website.

<http://corefleet.com.au/useful-downloads>

8 Safety Management System

Corefleet recognises the obligation and responsibility of management to provide and maintain a safe working environment for the benefit of our employees, our customers, and all personnel associated with our company. We will:

- Comply with all relevant legislation and ensure all sites have operating systems and procedures compatible with the law, statutory requirements and customer defined practice. Where legislation does not exist Corefleet will implement a code of practice that reflects the company's commitment to Occupational Health and Safety.
- Put into practice appropriate levels of training and education at all levels of management and staff.
- Provide the environment, forum and structure that are conducive to the communication of information with employees and customers about Occupational Health and Safety issues applicable to the company's products and services.
- Seek continuous improvement in the area of Occupational Health and Safety for our employees and our customers.

9 Environmental Management System

Corefleet is committed to achieving the highest standards in environmental performance. In doing this, we aim to provide our employees, our customers and the wider community, a healthy environment in which we operate. To achieve this Corefleet is committed to:

- Complying with all relevant legislation and ensuring all branches have operating systems and procedures which will be compatible with the law.
- Implementing standards and a code of practice that reflects the company's and community's commitment to the environment where legislation does not exist.
- Providing information to employees and customers about the environmental impacts of its products and services.
- Communicating with our employees and customers' environmental issues and maintaining and consultative approach to employees and customers in the improvement of environmental effects.
- Seeking continuous improvement in the area of protecting the environment, employees, customers and the community in which we operate.

All managers, supervisors and employees are accountable for the environment in their area and are expected to apply their knowledge and skills to protect themselves and the environment.